

Customer :  
Project Name :  
Project No. :  
Revision No. :

---

# SPECIFICATION for INDUCTION MOTOR



0		For Bidding			
No.	DATE	DESCRIPTION	PREPARED BY	CHECKED BY	APPROVED BY

# AC INDUCTION MOTOR DATA SHEET

Model No.or RFQ No.		Item No.		Rev. No. [      ]			
Project Name		Project No.		Quantity      sets			
<b>GENERAL SPECIFICATION</b>			<b>PERFORMANCE DATA</b>				
Frame Size	80M		Rated Output	0.4 kW      0.5 HP			
Type	HLP-0.4/6		Number of Poles	6			
Enclosure(Protection)	Totally Enclosed / IP55		Rotor Type	Squirrel Cage			
Method of Cooling	IC411(FC)		Starting Method*	<input checked="" type="checkbox"/> D.O.L <input type="checkbox"/> Y-Δ			
Rated Frequency	60 Hz		Rated Voltage	380 V			
Number of Phases	3		Current	Full Load	1.2 A		
Insulation Class	<input checked="" type="checkbox"/> F <input type="checkbox"/> B <input type="checkbox"/> H		Locked-rotor**	450 %			
Temp. Rise at full load (by resistance method)	at 1.0 S.F      80 deg. C		Efficiency				
Motor Location	<input checked="" type="checkbox"/> Indoor <input type="checkbox"/> Outdoor						
Altitude	Less than 1000 meter		100% Load	75.3 %			
Relative Humidity	Less than 80 %		Power Factor(p.u)				
Ambient Temp.	40 deg. C (Max.)						
Duty Type	Continuous (S1)		100% Load	0.668			
Service Factor	1.15		Speed at Full Load	1140 r.p.m			
Mounting	B3		Torque				
Bearing	Type	Anti-Friction	Full Load	0.3 kg·m      3.3			
	DE/N-DE	6204ZZC3 / 6203ZZC3	Locked-rotor**	230 %      0.8 kg·m			
	Lubricant	Grease	Breakdown**	200 %      0.7 kg·m			
External Thrust	Not applicable		Moment of Inertia (J)				
Coupling Method	<input checked="" type="checkbox"/> Direct <input type="checkbox"/> V-Belt		Load(Max.)	0.854 kg·m <sup>2</sup>			
Shaft Extension	<input checked="" type="checkbox"/> Single <input type="checkbox"/> Double		Motor	0.003 kg·m <sup>2</sup>			
Terminal	Main	<input checked="" type="checkbox"/> Aluminum <input type="checkbox"/> Cast Iron	Sound Pressure Level (No-load & mean value at 1m from motor)	55 dB(A)			
Box	Aux.	<input type="checkbox"/> Yes <input type="checkbox"/> No	Vibration	1.6 mm/sec (peak)			
	Location	Refer to Outline Drawing	Permissible number of consecutive starts	Cold 20 times Hot 15 times			
Application			Paint	Munsell No.	PHANTONE 279C		
Area classification	Non-Hazardous						
Type of Ex-Protection	Not applicable						
Applicable Standard	KS, IEC, NEMA MG1 Part30(Vpeak)						
<b>ACCESSORIES</b>			<b>SUBMITTAL DRAWING</b>				
			Outline Dimension Drawing \ Motor Weight(Approx.)				
			B3      LM-A1080B3P3V01      18 kg				
			<b>REMARK</b>				
			*. Premium efficiency(IE3) acc. to KS C 4202				
			*. SSEN Series				
			*. For use on PWM VFD 10:1VT,3:1CT@1.0S.F&F Temp.rise				
<b>SPARE PARTS</b>			<div style="border: 2px solid red; padding: 20px; text-align: center; font-size: 2em; color: red;">FOR BIDDING</div>				
			Date	DSND	CHKD	CHKD	APPD
			2021-04-21				

Type : HLP-0.4/6

Full Load Torque : 0.3 kg.m

Load moment of Inertia (J) : - kg.m<sup>2</sup>

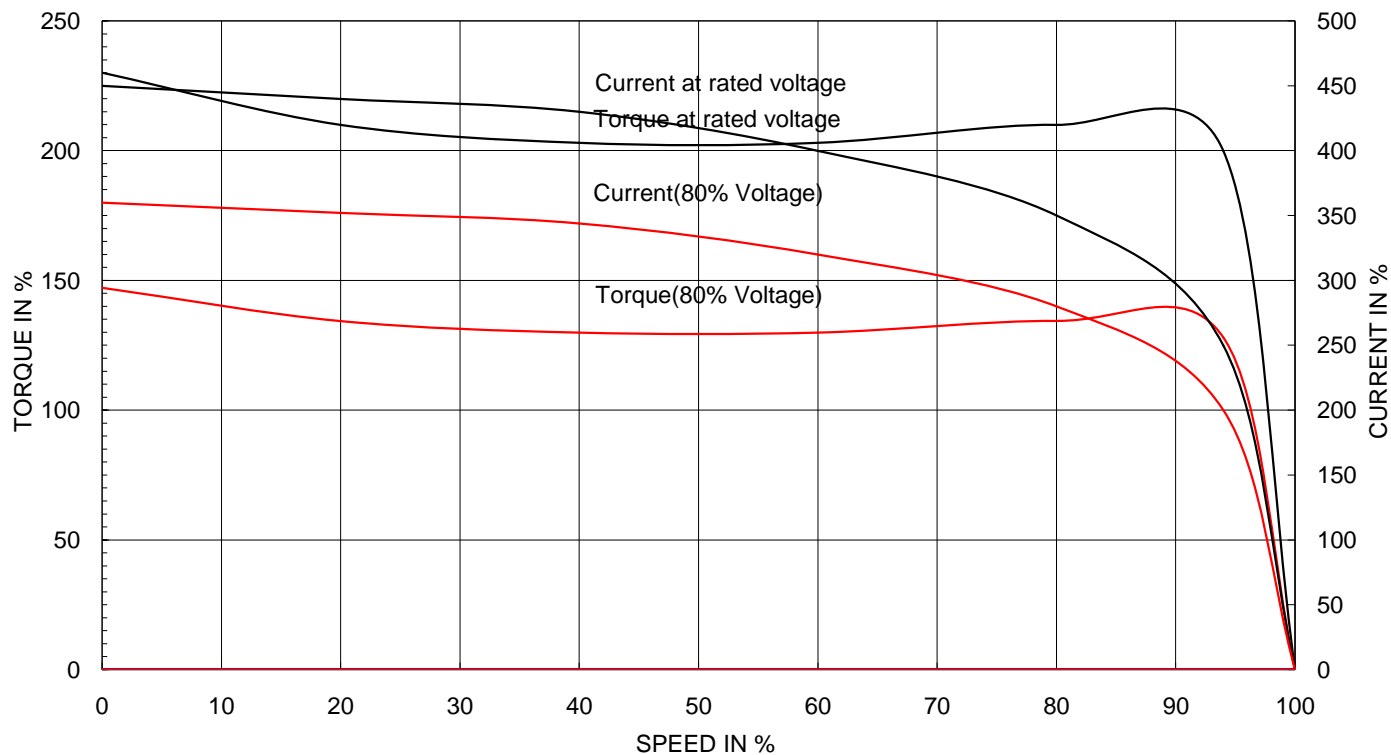
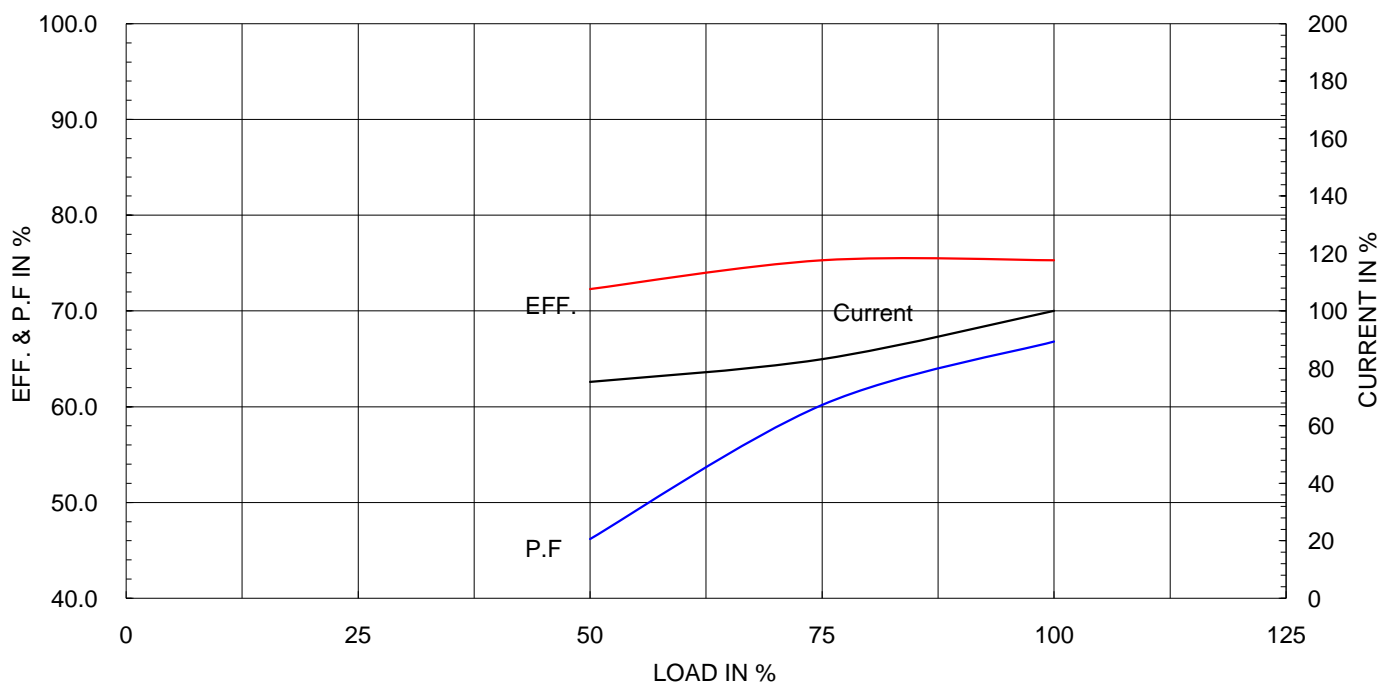
Motor moment of Inertia (J) : 0.003 kg.m<sup>2</sup>

0.4 kW 6 P 60 Hz

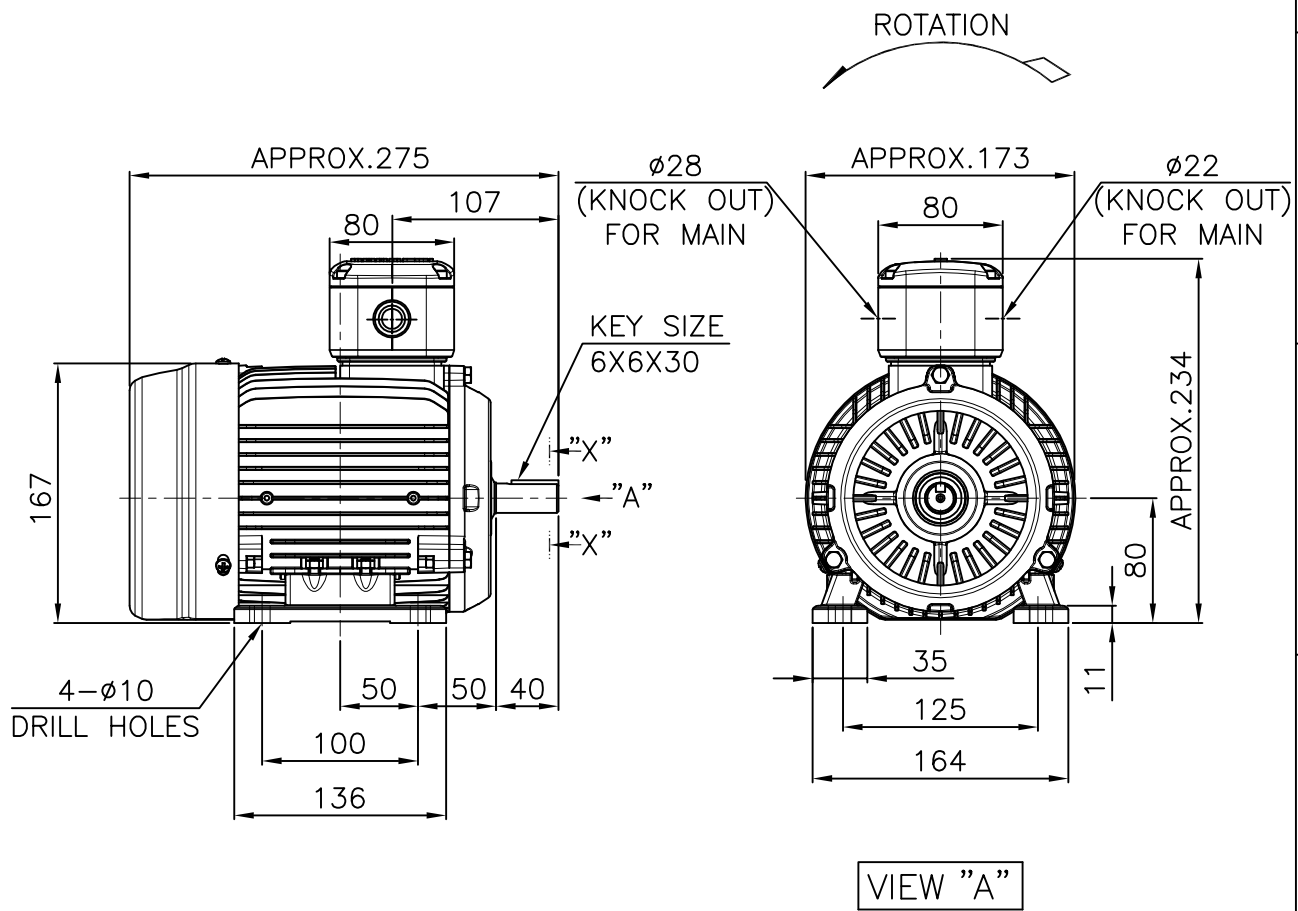
Speed at Full Load : 1140 RPM

Rated Voltage 380

Full Load Current 1.2A

**SPEED VS TORQUE & CURRENT CURVE**

**OUTPUT VS EFF., P.F & CURRENT CURVE**


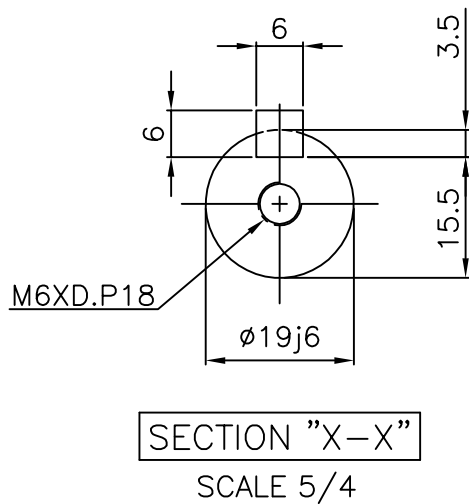
1			2		3		4		
▽	50S	REV	DATE	CONTENTS		REVD BY	CHKD BY	CHKD BY	APPD BY
▽▽	12.5S								
▽▽▽	3.2S								
▽▽▽▽	0.4S								



### NOTE

1.TOLERANCE :

CENTER HEIGHT	80	$\begin{smallmatrix} 0 \\ -0.5 \end{smallmatrix}$
BASE HOLES	$\phi 10$	$\begin{smallmatrix} +0.36 \\ 0 \end{smallmatrix}$
SHAFT DIAMETER	$\phi 19$	$\begin{smallmatrix} +0.009 \\ -0.004 \end{smallmatrix}$
KEYWAY WIDTH	6	$\begin{smallmatrix} 0 \\ -0.030 \end{smallmatrix}$
KEYWAY DEPTH	3.5	$\begin{smallmatrix} +0.1 \\ 0 \end{smallmatrix}$
KEY WIDTH	6	$\begin{smallmatrix} 0 \\ -0.030 \end{smallmatrix}$
KEY HEIGHT	6	$\begin{smallmatrix} 0 \\ -0.030 \end{smallmatrix}$

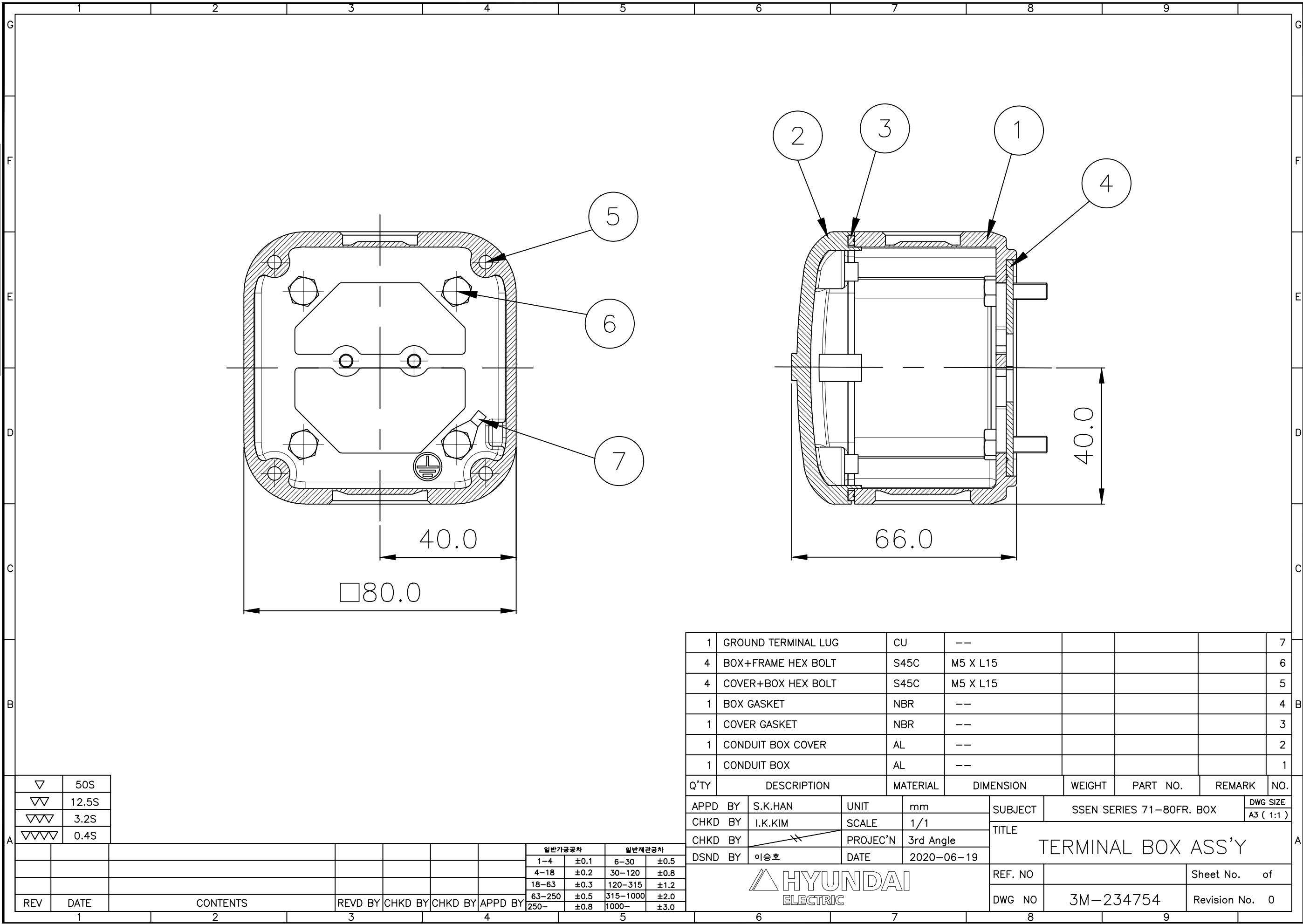


APPD BY	S.K.HAN	UNIT	mm	SUBJECT	KS, IEC Fr.80M	DWG SIZE	A4 ( 15 )
CHKD BY	S.Y.KIM	SCALE	1/5	TITLE OUTLINE			
CHKD BY	I.K.KIM	PROJEC'N	3각법 (3rd Angle)				
DSND BY	S.H.LEE	DATE	2020.06.16				
				REF. NO	Sheet No. of		
				DWG NO	LM-A1080B3PTV01	Revision No.	0

THIS DRAWING IS PROPRIETARY TO HYUNDAI ELECTRIC. NO PART OF THIS DRAWING  
MAYBE REPRODUCED WITHOUT THE PERMISSION OF HYUNDAI ELECTRIC.


본 도면은 현대일렉트릭(주) 재산이므로  
허가없이 복사할 수 없음 (취급주의)

HYUNDAI  
ELECTRIC



▽	50S
▽▽	12.5S
▽▽▽	3.2S
▽▽▽▽	0.4S

REV	DATE	CONTENTS	REVD BY	CHKD BY	CHKD BY	APPD BY	일반가공공차		일반재관공차	
							1-4	±0.1	6-30	±0.5
							4-18	±0.2	30-120	±0.8
							18-63	±0.3	120-315	±1.2
							63-250	±0.5	315-1000	±2.0
							250-	±0.8	1000-	±3.0

1	GROUND TERMINAL LUG	CU	--					7
4	BOX+FRAME HEX BOLT	S45C	M5 X L15					6
4	COVER+BOX HEX BOLT	S45C	M5 X L15					5
1	BOX GASKET	NBR	--					4
1	COVER GASKET	NBR	--					3
1	CONDUIT BOX COVER	AL	--					2
1	CONDUIT BOX	AL	--					1
Q'TY	DESCRIPTION	MATERIAL	DIMENSION	WEIGHT	PART NO.	REMARK	NO.	
APPD BY	S.K.HAN	UNIT	mm	SUBJECT	SSEN SERIES 71-80FR. BOX		DWG SIZE	
CHKD BY	I.K.KIM	SCALE	1/1	TITLE TERMINAL BOX ASS'Y			A3 ( 1:1 )	
CHKD BY		PROJEC'N	3rd Angle					
DSND BY	이승호	DATE	2020-06-19					
				REF. NO	Sheet No. of			
				DWG NO	3M-234754 Revision No. 0			